

FLIGHT SIM PM

QUALITY FOR EVERY BUDGET



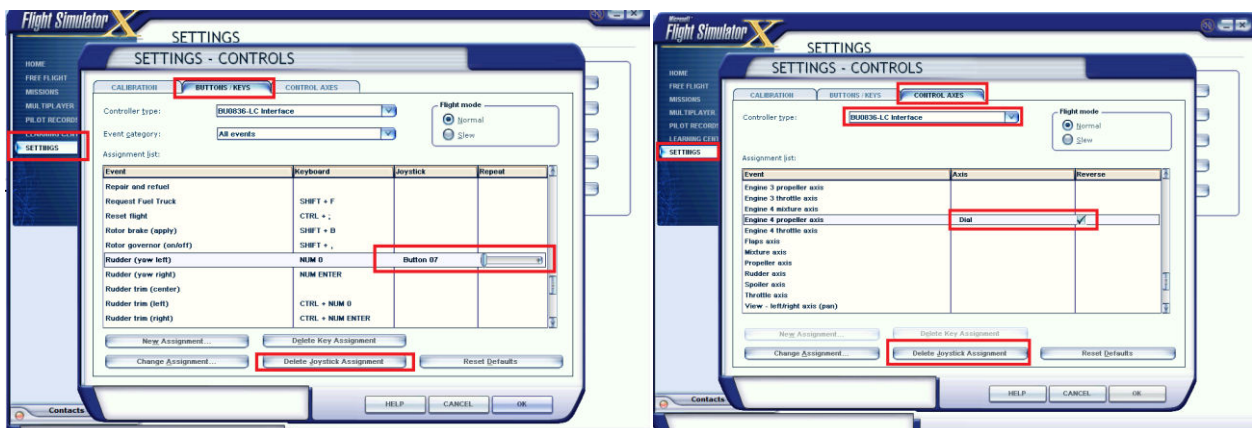
737 Throttle Quadrant FSX



We always recommend additional softwares and addons like FSUIPC,LINDA ,Prosim ,PMDG,Ifly in order to use this type of hardware at 100%.You need to understand that using this type of hardware with default FSX,P3D might not work as expected since the simulators settings/control menus and default planes are very limited.

1.Follow the instructions in our FlightSimPM Hardware user manual to make sure the new hardware works correctly

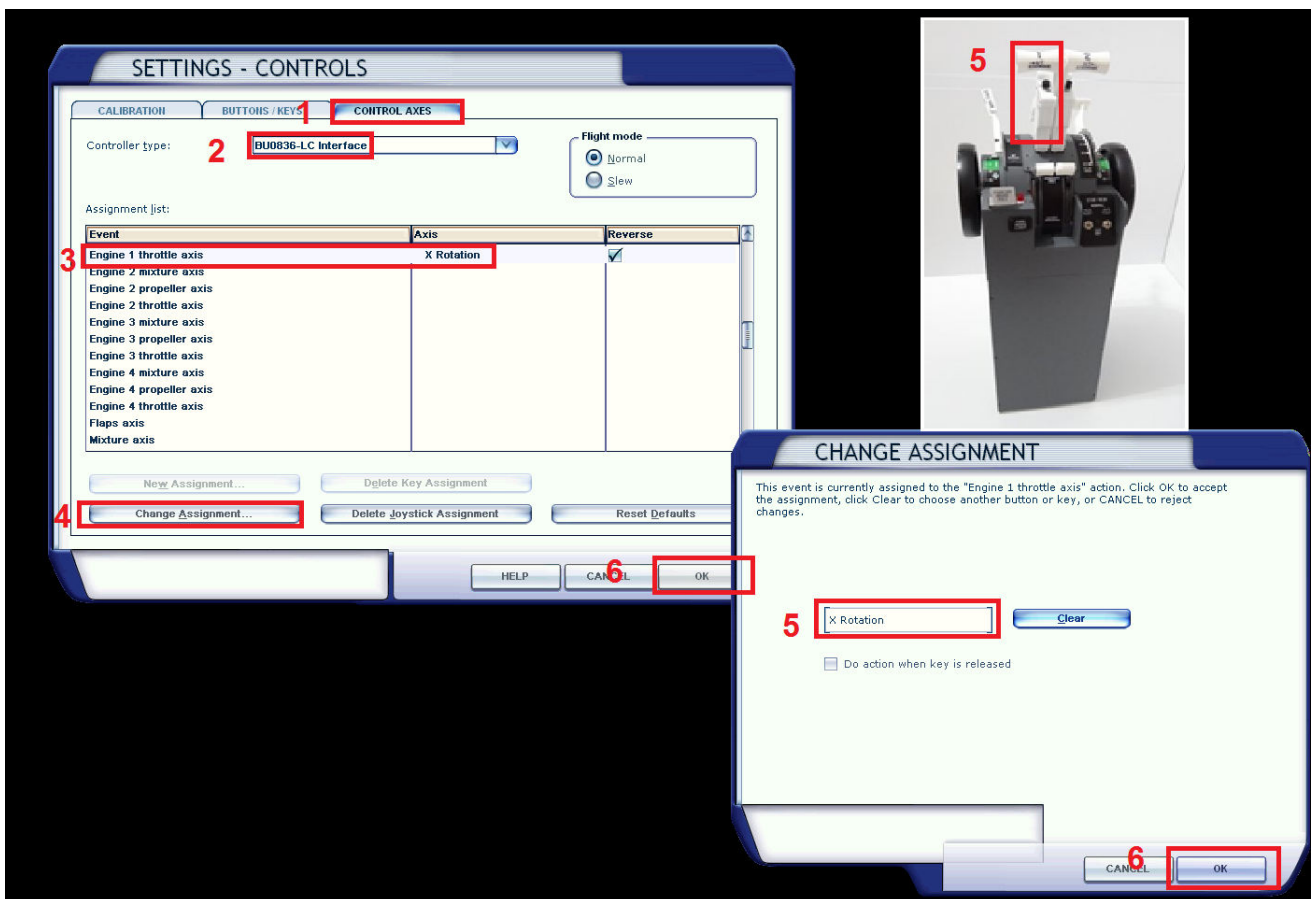
2.Plug in your throttle and open FSX/Settings.Scroll trough the default menu and delete all the preassigned joystick assignments and do the same for axis if necessary.This is required only once



Axis Setup

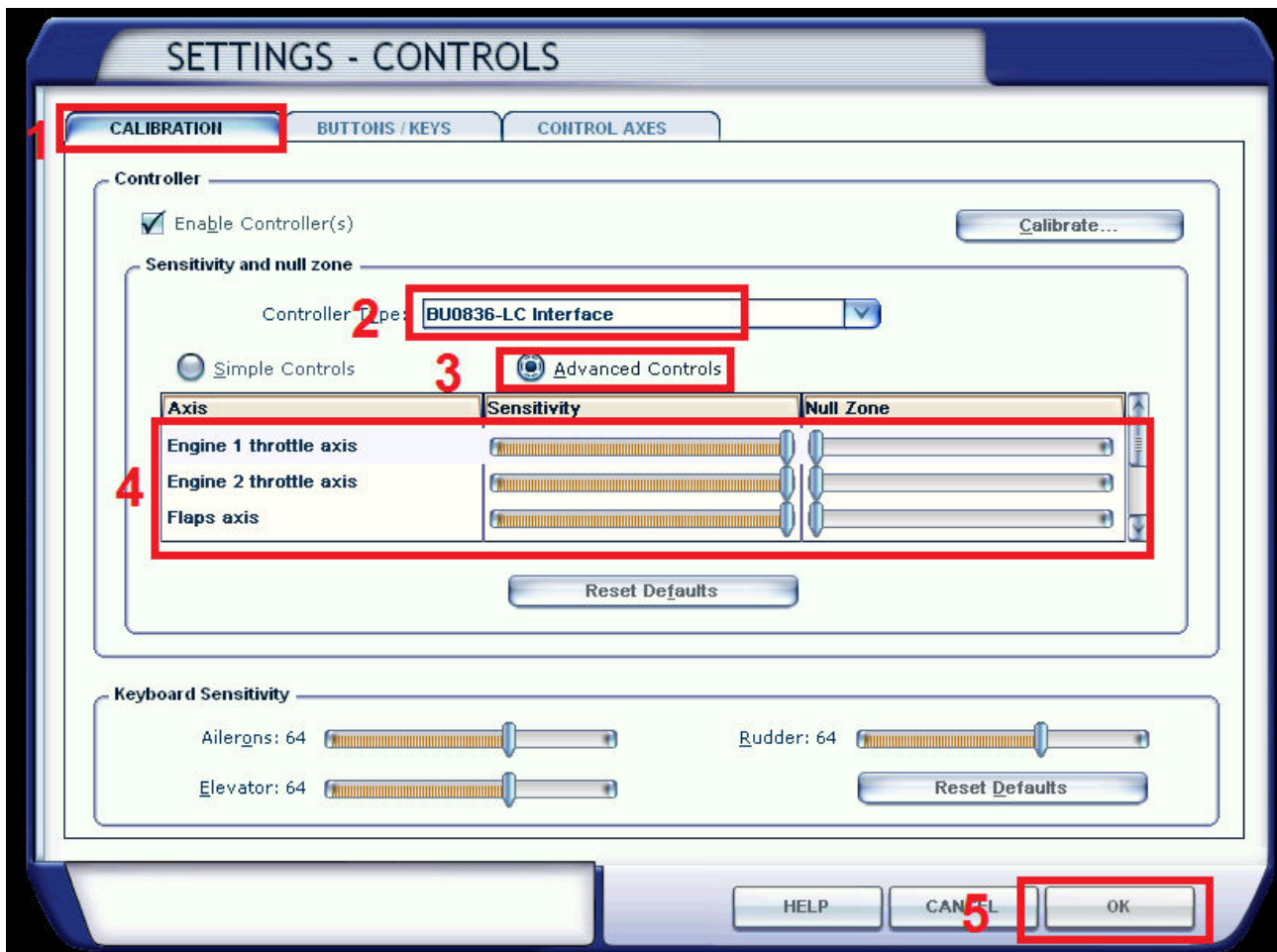
- 1.open FSX/Settings/control axis
- 2.select your new hardware
- 3.select your corresponding axis
- 4.change assignment
- 5.move the axis on your throtte
- 6.press ok

Do this for all axis on the throttle quadrant and remember to check reverse for all axis if necessary



Axis Calibration

- 1.go back to the calibration menu
 - 2.select your new hardware
 - 3.press advance controls
 - 4.set all axis at max sensitivity with no dead zone
 - 5.press ok
- test all axis with your flight model



Buttons/Switches Configuration

1. go to buttons/keys
2. select your new hardware
3. control surfaces
4. change assignment
5. move trim wheel to configure it up/down and set sliders to max
6. press ok

SETTINGS - CONTROLS

CALIBRATION 1 **BUTTONS / KEYS** CONTROL AXES

Controller type: 2 BU0836-LC Interface

Event category: 3 Control surfaces

Flight mode
 Normal
 Slew

Assignment list:

Event	Keyboard	Joystick	Repeat
Aileron trim (center)			
Aileron trim (left)	CTRL + NUM 4		
Aileron trim (right)	CTRL + NUM 6		
Ailerons (bank left)	NUM 4		
Ailerons (bank right)	NUM 6		
Elevator trim (down)	NUM 7	Button 01	
Elevator trim (up)	NUM 1	Button 02	
Flaps (extend fully)	F8		
Flaps (extend incrementally)			
Flaps (retract fully)	F5		

New Assignment... Delete Key Assignment

4 Change Assignment... Delete Joystick Assignment Reset Defaults

HELP CAN 6 OK

Autothrottle ARM

Autothrottle TOGA

SETTINGS - CONTROLS

CALIBRATION **BUTTOIS / KEYS** CONTROL AXES

Controller type: BU0836-LC Interface

Event category: Engines

Flight mode:
 Normal
 Slew

Event	Keyboard	Joystick	Repeat
Autofeather (arm/off)			
Autothrottle (arm)	SHIFT + R	Button 03	
Autothrottle engage (TOGA)	CTRL + SHIFT + G	Button 04	
Auxiliary fuel pump (on/off)			
Carb heat/eng anti-ice (on/off)	H		
Concorde reheat/afterburner (on/off)	SHIFT + F4		
Engine (auto shutdown)			
Engine (autostart)	CTRL + E		
Engine (select)	E		
Engine Fire Extinguisher (engage)			

New Assignment... Delete Key Assignment

Change Assignment... Delete Joystick Assignment Reset Defaults

HELP CANCEL OK

in order to configure the parking brake do as shown. this way the parking brake will be synchronized with your simulator flight model

SETTINGS - CONTROLS

CALIBRATION **BUTTOIS / KEYS** CONTROL AXES

Controller type: BU0836-LC Interface

Event category: Systems

Flight mode:
 Normal
 Slew

Event	Keyboard	Joystick	Repeat
Brakes (apply left)	NUMMULT		
Brakes (apply right)	NUM_2		
Brakes (apply/release) 2 off	.	Button 11	
Brakes (set parking) 1 on	CTRL + .	Button 12	
Brakes anti-skid (on/off)			
Cabin alert - No Smoking (on/off)			
Cabin alert - Seatbelts (on/off)			
Concorde nose & visor (extend)			
Concorde nose & visor (retract)			
Concorde nose/visor (decrease angle)			

New Assignment... Delete Key Assignment

Change Assignment... Delete Joystick Assignment Reset Defaults

HELP CANCEL OK

reverse thrust configuration trough default menu does not allow independent eng1/eng2.

to configure reverse thrust FSUIPC(registered version) is recommended

Go to FSUIPC



- 1.select the buttons+switches tab
 - 2.trigger reverse lever 1
 - 3.select for FS control
 - 4.selects the FSUIPC inputs as shown
 - 5.check repeat while held
 - 6.press ok
- Repeat the same steps for reverse lever 2

This block contains three images. On the left, there are two screenshots of the 'FSUIPC Options and Settings' dialog box. The top screenshot shows the 'Buttons + Switches' tab selected. The 'Joy#' field is set to 0 and the 'Btn#' field is set to 4. The 'Control sent when button pressed' dropdown is set to 'Throttle1 Decr'. The 'Control to repeat while held' checkbox is checked, and the 'Control sent when button released' dropdown is set to 'Throttle1 Cut'. The 'OK' button is highlighted with a red box. The bottom screenshot shows the same dialog box with the 'Joy#' field set to 0 and the 'Btn#' field set to 5. The 'Control sent when button pressed' dropdown is set to 'Throttle2 Decr'. The 'Control to repeat while held' checkbox is checked, and the 'Control sent when button released' dropdown is set to 'Throttle2 Cut'. The 'OK' button is highlighted with a green box. On the right, there is a photograph of a throttle lever assembly. The lever is labeled '1' and '2'. The lever is shown in a retracted position. A red box highlights the lever's base, and a green box highlights the lever's tip.

fuel cutoff levers configuration trough default menu does not allow independent eng1/eng2.

to configure fuel cutoff levers FSUIPC(registered version) is recommended

1.select the buttons+switches tab

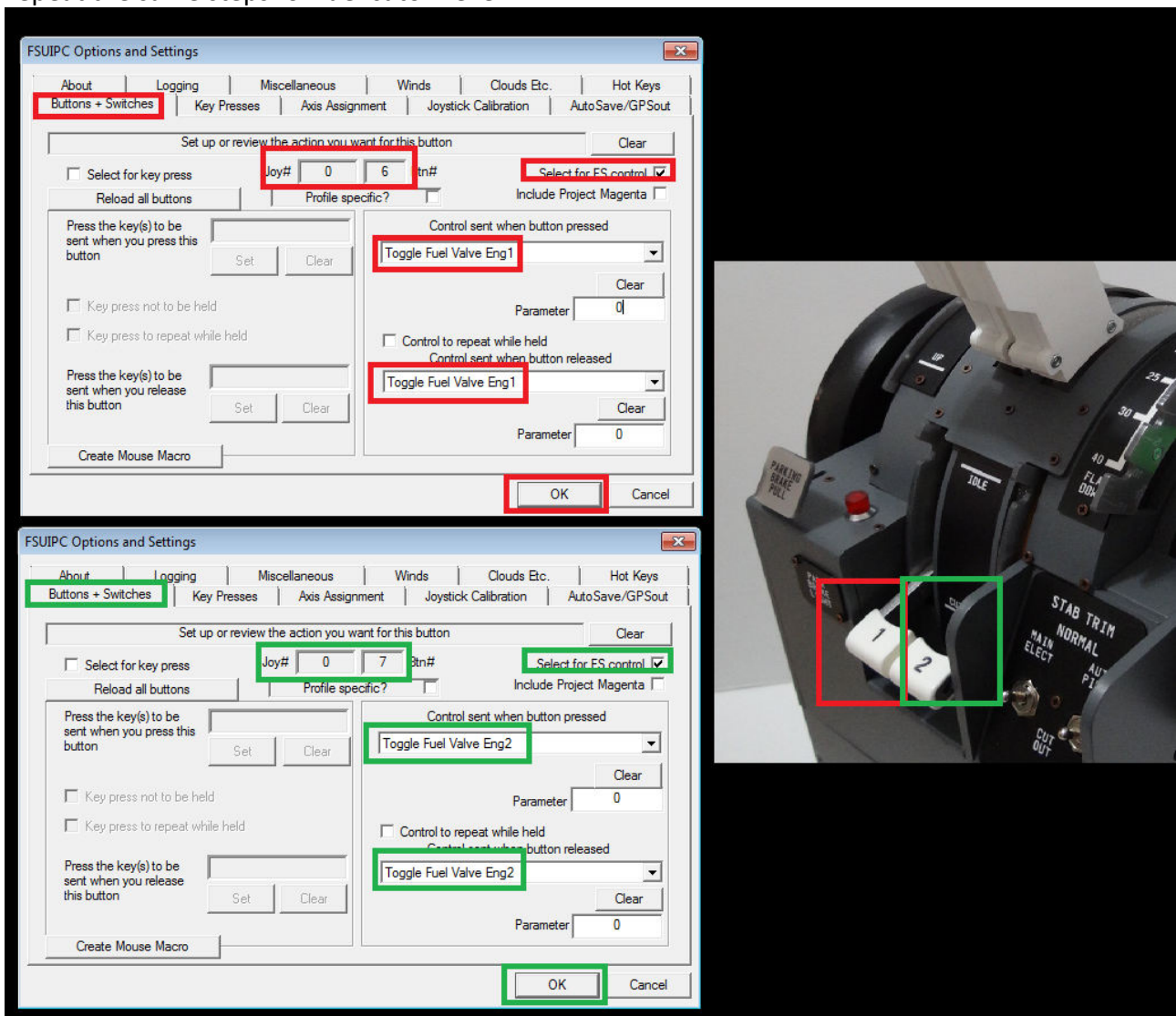
2.trigger fuel cutoff lever 1

3.select for FS control

4.selects the FSUIPC inputs as shown

5.press ok

Repeat the same steps for fuel cutoff lever 2



Stab Trim switches inputs are not present in FSX/P3D menu or FSUIPC therefore this switches can be used as you like

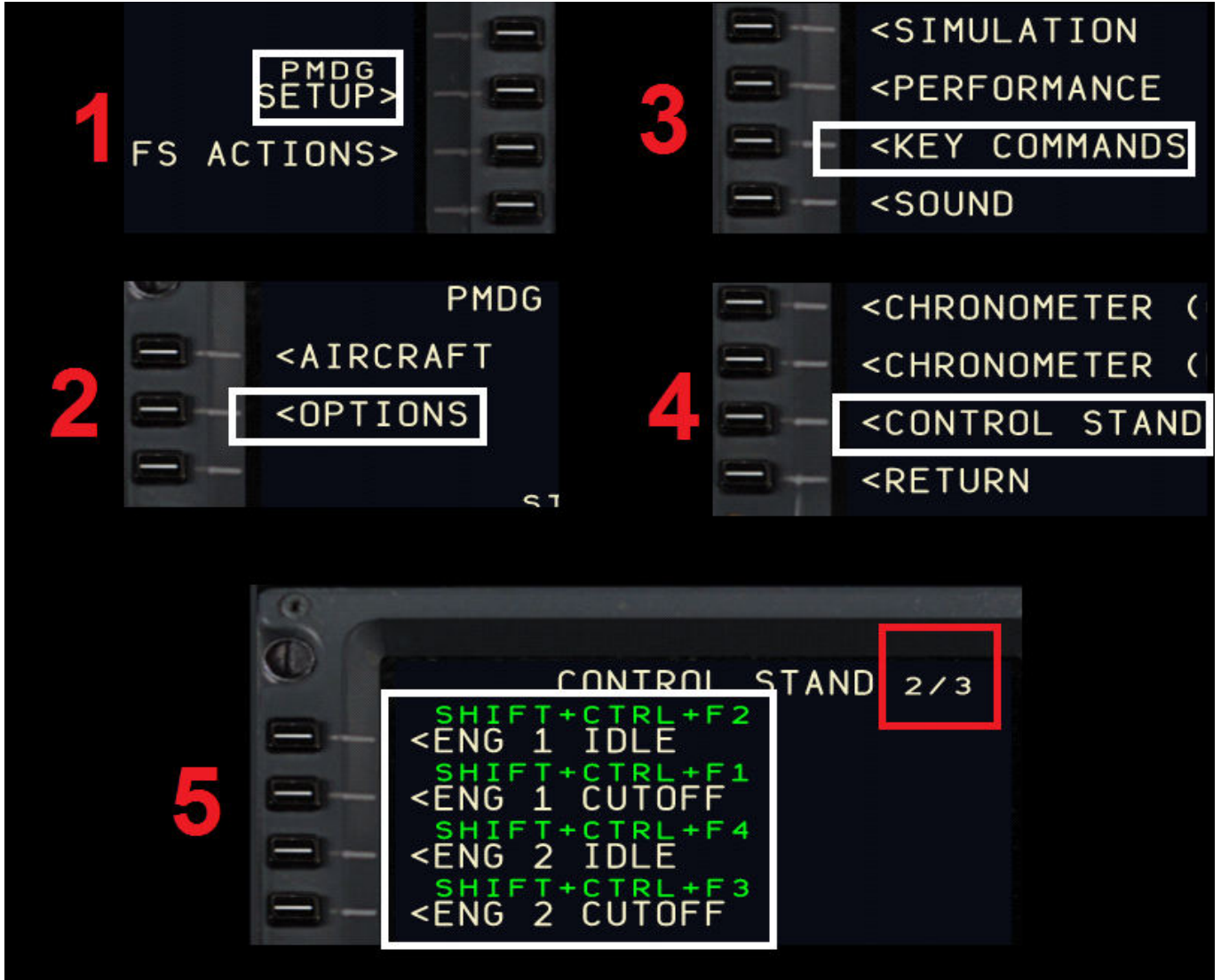


PMDG 737 NGX

The fuel cutoff levers through the configuration above will work but in the PMDG 737 3d cockpit will not be animated.

The workaround to this "issue" is to configure the fuel cutoff levers through FSUIPC with the help of key press inputs present in PMDG FMC

open PMDG FMC- PMDG SETUP/OPTIONS/KEY COMMANDS/CONTROL STAND/PAGE 2



using key commands you see here we will configure the fuel levers through FSUIPC

go to FSUIPC

1.select the buttons+switches tab

2.trigger fuel cutoff lever 1

3.select for key press

4.press SET and with your keyboard press the keys corresponding to the input in your FMC in this case ctrl+shift+F1

5.press SET and with your keyboard press the keys corresponding to the input in your FMC in this case ctrl+shift+F2

6.press ok

